

THE NEWSLETTER OF THE RED RIVER VALLEY RAILROAD HISTORICAL SOCIETY, INC.

www.rvrhs.org

Russell Pedro – President

W. Conway Link – Vice-President

Gary Fox – Secretary

Bill Hasheider – Treasurer

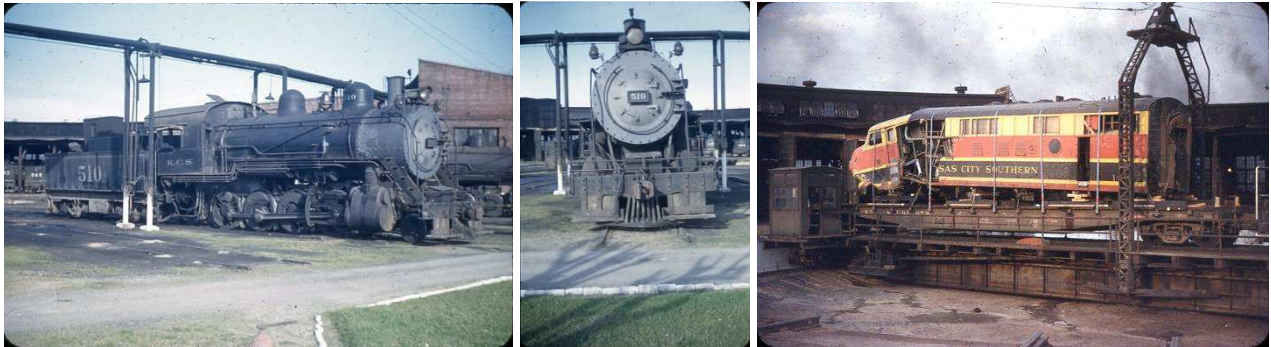
Dave Bland – Newsletter Editor – DDBland@aol.com

October, 2014

SHREVEPORT, LA

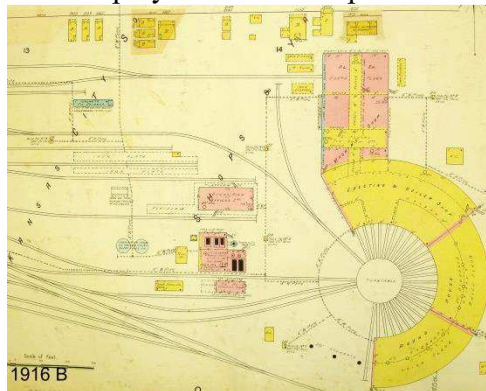
Our 33rd Year

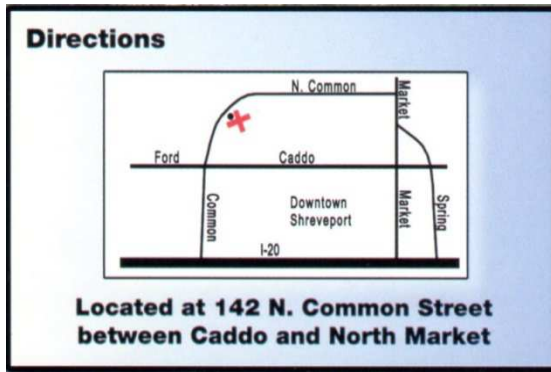
Shreveport KCS Roundhouse Scenes in 1952



Shown above are several photos taken in 1952. On the top row is KCS No. 510 (2-8-0) and a KCS diesel that has obviously been wrecked. On the bottom row are Louisiana & Arkansas No. 544 (2-8-2), a view of the roundhouse stalls and a rare KCS Fairbanks-Morse diesel. The photos came from the grandson of Allison Ray Collins (1908-2004), who was an employee of the KCS for fifty years serving in positions ranging from machinist apprentice to diesel shop foreman.

Before the KCS Deramus Yards near Cross Lake were opened in 1956, the roundhouse, shops and yards were located in the “West End” of Shreveport between Lakeshore Drive and Maple Street. That area is crossed by Interstate 20 now, although KCS tracks from Deramus Yards to downtown Shreveport are still in use there. Below is a portion of the 1916 Sanborn Fire Insurance map of the area. Full size Sanborn maps for several years are available for viewing in the LSU-Shreveport Noel Memorial Library Archives & Special Collections, and portions are on display in our Shreveport Railroad Museum. They are fascinating!





Upcoming Events

Oct. 17 – No meeting

Oct. 25 – RRVRS Fish Fry - Shreveport Water Works Museum – 142 N. Common St. – 3-7 p.m. (eat about 5 pm) \$8.00 per attendee (pay when you get there)

Nov. 7 - First Friday Railroad Photography Meeting – 7:30 p.m. at the Shreveport Water Works Museum – 142 N. Common St. – call (318) 458-3123 for information.

The President's Message

Hello Railfans !

I can tell it's time to write another newsletter article because of the calls I keep getting from Dave.

One of the things that I have to mention on occasion is the passing of one of our members. This time I have the sad chore to inform you of the passing of Chuck Heimerdinger from this life on Sept. 14. Chuck was a long time member of our group back to when we were meeting at the Barnwell Center. He was one of only 2 members that had a lifetime membership. He lived in Marshall and drove over for our meetings and also the First Friday meetings. Chuck was always there when we called for help. We are all going to miss him so keep his family in your thoughts and prayers.

This month we will not have a regular business meeting because on Saturday the 25th we will have our Fall Fish Fry. The menu will be the usual fish, fries, hush puppies, cole slaw and shrimp. If you would like to bring dessert we encourage you to do so. We have a nice place to hold the event now because of the completed meeting room at the Water Works Museum. We will be there from 3:00 to 7:00 pm, and will eat about 5:00 pm. I am looking forward to seeing you all at the outing. Bring some friends !

Happy Railroading!
Russell

Are You Up-to-Date on Your Dues ?

Please send a check or money order for \$20.00 with this membership form to Bill Hasheider at 6813 Despot Road, Shreveport, LA 71108

Name _____ Email _____

Address _____

City _____ State _____ Zip Code _____

Red River Valley Railroad Historical Society
3012 Nottingham Drive
Shreveport, LA 71115

Fish Fry on Oct. 25
3-7 p.m.